

tapo[®]
fix

Product catalog

Pasting Machines, Dispensers and accessories
for North, Central and South America



tapo[®] fix History

i AFTER THE FALL OF THE BERLIN WALL IN 1989, THERE WAS A GREAT DEMAND FOR TAPO-FIX PRODUCTS IN THE FORMER GDR, WHICH RESULTED IN FULL ORDER BOOKS AND A LOT OF OVERTIME

1950

i UNTIL 1965 THE METAL CONSTRUCTION COMPANY WARNECKE MANUFACTURES THE MACHINES FOR TAPO-FIX, PAUL HOHENHÖVEL SELLS THEM HIMSELF AT CONSTRUCTION SITES

1954
Master painter Paul Hohenhövel lives and works in Wolfsburg, a young town that grew up next to the Volkswagen factory

1960

Paul Hohenhövel came up with the idea of pasting and cutting wallpaper using a machine

1965

tapo-fix starts manufacturing Pasting Machines in 2 garages

March 10, 1963

after numerous attempts, the patent for a „machine for pasting and trimming wallpaper“ was registered

September 1st, 1963:

in order to use the patent and build machines, the company tapo-fix E. Hohenhövel is founded (the E stands for Edeltraud, the wife of Paul Hohenhövel)

1966

The eldest daughter of Paul Hohenhövel, Roswitha, takes over the administration and bookkeeping

1975

The first model change in the professional Pasting Machines takes place, the M3 series is replaced by the CB series, which is still known today

Smaller Pasting Machines for do-it-yourselfers are developed and produced

1970

1973

Werner Engel, Roswitha's husband, begins to work as managing director at tapo-fix, Paul Hohenhövel's second daughter, Cornelia, also takes on administrative activities alongside her sister

1967

Artur Elgert founds a sales agency and takes over the sale of the machines as general agent. The garages no longer offers enough space for production and the company moves to an empty dance hall in a neighboring village

1980

1976

on July 1st, the space in the dance halls is no longer sufficient for the growing production and tapo-fix moves to its own production hall in Wolfsburg-Vorsfelde

the product portfolio is continuously expanding, accessories such as Equipment-Tables and counters are developed and offered

the new hall soon no longer offers space for the ever-increasing production with the many machines and workplaces, which is why the hall was expanding on all sides

1995

the revised do-it-yourself Pasting Machines PROfix and minifix are introduced

1999

Wood Cases for Pasting Machines and accessories are added to the portfolio

2007

the Sliding Cutter for all Pasting Machines is developed

2010

with the CB Aqua, tapo-fix now also offers a machine for processing pre-pasted wallpaper

2013

the mobile 2m Equipment-Table is presented as a world first, followed later by a wider version

2020

Moritz Hohenhövel becomes the sole owner and managing director, Hartwig Hohenhövel remains active in an advisory capacity at tapo-fix
a photovoltaic system is installed on the hall roof, which supplies the production with electricity

UNTIL 2022 TAPO-FIX SOLD ALMOST A MILLION PASTING MACHINES AND ACCESSORIES ALL OVER THE WORLD

1990

2000

1993

On January 1st, Mario Brix is hired by Artur Elgert to support the distribution of tapo-fix products in Germany
On April 1st, Paul Hohenhövel's son, Hartwig, changes from Volkswagen to tapo-fix, now all of the founder's children work in the company
At the „Farbe“ exhibition in 1993, the largest trade fair for painting supplies, the universal dispenser is presented, another important tool for professional painters and wallpaper hangers

December 11th, 1996

At the age of 72, Paul Hohenhövel does not wake up from his afternoon nap

2002

all CB Pasting Machines are made mobile on castors

2005

Mario Brix takes over the tapo-fix general agency for Germany from Artur Elgert, who retires

November 12th, 2006

Edeltraud Hohenhövel dies at the age of 78. She often stopped by her children's office until the end. The three children become shareholders of tapo-fix

2009

On September 30th, the managing director Werner Engel retires after 36 years at tapo-fix, Hartwig Hohenhövel becomes the sole managing director

2018

Moritz Hohenhövel becomes co-owner and managing director

production is thoroughly modernized, new CNC lathes and CNC bending machines are purchased and production is improved in order to cope with the increased demand

2014

Hartwig Hohenhövel's son Moritz starts working at tapo-fix after completing his banking apprenticeship

2021

tapo-fix partners with ProHangers Supply as their representative in the US and sales steadily increase. A new focus is placed on expanding the American market and developing products specifically designed for the region



„ Having worked in the wallcovering industry as a professional installer since 1994, I have found quality tools to be invaluable.

tapo-fix equipment enables me to neatly and efficiently perform my installations with the level of excellence and precision which I, and my clients, demand. “

MARC SHELTON

EXCLUSIVE PARTNER OF TAPO-FIX GMBH & CO. KG

WWW.PROHANGERSSUPPLY.COM

INSTAGRAM: @PROHANGERSSUPPLY





„ When the opportunity to represent **tapo-fix** in the Americas arose, I was already convinced of their product’s unmatched quality, having used tapo-fix products for many years prior with consistent reliability and excellent results. The use of **tapo-fix** tools and equipment has made handling the materials I install simple and efficient and has dramatically increased my productivity and profits. *I am extremely excited to share these amazing products with fellow installers* to help them also streamline their installation process through the use of the best wallcovering equipment on the market today. “



Products

PASTING MACHINES

CB X SERIES

- **CB 70 X** _____ 08
ACCESSORIES **CB 70 X** _____ 09-10
- **CB 67 X** _____ 14
ACCESSORIES **CB 67 X** _____ 15-17
- **CB 75 Xa** _____ 20
ACCESSORIES **CB 75 Xa** _____ 21-25
- **CB 1000 Xa** _____ 28
ACCESSORIES **CB 1000 Xa** _____ 29-33
- **CASE-SETS 70 Xi / 67 Xi / 75 Xia / 1000 Xia** _____ 36-37
- **CB AQUA N** _____ 40
ACCESSORIES **CB AQUA N** _____ 41-43

S SERIES

- **S2032** _____ 46
ACCESSORIES **S2032** _____ 47-51
- **S2040** _____ 54
ACCESSORIES **S2040** _____ 55-59

56 AND 60 INCH PASTING MACHINES

- **CB 56** _____ 62
ACCESSORY **CB 56** _____ 63
- **XS 60** _____ 66
ACCESSORY **XS 60** _____ 67

DIY PASTING MACHINES

- **PROfix** _____ 70
- **PROfix CS** _____ 71

DISPENSERS

UNIVERSAL DISPENSERS

- **GAU 80i / 109i / 140i** _____ 72-73
ACCESSORIES **GAU 80i / 109i / 140i** _____ 74-75

NOTES _____ 78-79

CB 70 X PASTING MACHINE

Less in, more out! The newly designed CB X Pasting Machines!

The CB 70 X is a tabletop machine and is the entry level into the world of professional Pasting Machines. It is suitable for pasting all wallpapers up to 22 inch in width.

The newly designed tapered paste box of the X-series Pasting Machines feeds paste directly to the paste roller 30% more efficiently than its N series predecessors. The results are less frequent refills and greater output per fill up without increasing the size of the paste box. The tapered design also reduces the amount of residual paste on the perimeter of the paste box, which aids in keeping the machine cleaner during operation and makes its final cleaning quicker and easier.

The CB X Series design utilizes a single roller pasting system in which the roller, rather than a scraper bar, is adjusted to control paste levels. The machine is entirely friction driven, requiring no gears for the pasting process. The result is a very lightweight but highly durable Pasting Machine that provides precise results and is easy to maintain.

Manufactured from corrosion-resistant materials using state-of-the-art machinery and highly-skilled technicians for long service life, guaranteed precision and unmatched quality. Combined with the GT 70 Fi Equipment-Table, the machine and table become a mobile work station that can be easily moved in tandem around the jobsite.



CB 70 X

PASTING MACHINE CB 70 X

| Art. | Dimensions | Weight |
|-------|----------------------|----------|
| CB70X | 25,5 x 15,5 x 6,5 in | 21,0 lbs |

Benefits

- + easy to use
- + even paste application
- + small dimensions
- + light weight

CB 70 X Accessories*

Sliding Cutter

CB inch counter

CB 70 X Pasting Machine

Equipment-Table 70 Fi



* Optional accessories, not included

tapo[®]
fix

CB 70 X Accessories



Equipment-Table 67 Ni

The 67 Ni Equipment-Table attaches directly to the UG 67 N stand providing a 24" x 35" working area and two lower shelves for storage of tools and materials. A slotted stainless steel cutting guide and an adjustable stop bar are installed on the table which can be used in conjunction with the vertical and horizontal inch scales marked on the table's surface to facilitate quick and easy cutting of booked panels of wallcovering to specific widths. The table's locking casters enable the table and stand to be moved together as a single unit while connected. The table can be folded up and hung on the stand for easy transport. The table is solidly constructed of durable, lacquered wood and stainless steel.



Equipment-Table 70 Fi

The CB 70 X Pasting Machine can be mounted on top of the GT 70 Fi Equipment-Table using the table's built-in bracket that quickly connects the table to the machine and provides a safe and sturdy connection between the two pieces of equipment. The Equipment-Table has a slotted stainless steel cutting guide and markings scaled in inches for cutting pasted wallpaper to the desired widths. Locking casters ensure the table stays in place while in use and facilitates easy mobility around the job site while remaining fully set up. The table measures 24" x 79" and can be easily folded in half for storage and transport. It comes equipped with a cut out hand hole for ergonomic carrying. Even in narrow stairwells, you don't bump into the steps or walls. Constructed of aluminum and lacquered wood, this table can withstand loads of up to 200 lbs.

EQUIPMENT-TABLES

| Art. | Dimensions | Weight |
|--------|-----------------------|----------|
| GT67Ni | 26,0 x 38,5 x 25,5 in | 37,5 lbs |
| GT70Fi | 24,0 x 79,0 x 35,5 in | 39,5 lbs |

Stand 70-67 N

The UG 70-67 N stand transforms the CB 70 X from a table-top machine into a standing machine. The stand is solidly designed and entirely constructed from stainless steel. Large locking casters facilitate quick and easy mobility and safe parking of the machine. The stand ergonomically folds into a 4" profile for easy transport and storage. The stand is designed to quickly attach to the optional GT 70 Fi and GT 67 Ni Equipment-Tables.

STAND 70-67 N

| Art. | Dimensions | Weight |
|----------|-----------------------|----------|
| UG70-67N | 26,5 x 21,5 x 10,0 in | 14,5 lbs |

Wood Case 70 N

The Wood Case is the best option for safely storing and transporting the Pasting Machine. Solidly hand-crafted from real wood, the Wood Case comes equipped with an ergonomic carrying handle and includes dedicated interior compartments for storing the CB inch counter, cutting knife and other accessories.



WOOD CASE 70 N

| Art. | Dimensions | Weight |
|-------|----------------------|----------|
| HK70N | 27,5 x 18,0 x 8,0 in | 15,5 lbs |



CB inch counter

The CB inch counter makes it possible to quickly and easily cut material to exact lengths in inches while pulling the material through the Pasting Machine. The counter eliminates the need for measuring the wallpaper on the table and is an extreme labor and time saver. Utilizing a bracket made of stainless steel, the CB inch counter quickly attaches to all CB and S Series Pasting Machines and all Universal Dispensers.

CB INCH COUNTER

| Art. | Dimensions | Weight |
|-------|--------------------|---------|
| MZCBI | 7,0 x 5,5 x 4,0 in | 1,5 lbs |

Sliding Cutter 67-70

The Sliding Cutter replaces the circular knife which is supplied with the Pasting Machine. The Sliding Cutter can be mounted on the machine with just two screws.

With a single quick motion, the Sliding Cutter makes a perfectly straight and clean cut, every time. With the Sliding Cutter, the working speed can be significantly increased, as there is no need to reach for the cutting knife for each cut or to replace it after each use. The blade is made of hardened steel, razor sharp and Teflon coated, ensuring precise cuts with every use and a long service life.



SLIDING CUTTER 67-70

| Art. | Dimensions | Weight |
|---------|---------------------|---------|
| SW67-70 | 31,0 x 3,0 x 7,0 in | 4,0 lbs |



CB 70



tapo[®]
fix

CB 67 X PASTING MACHINE

Less in, more out! The newly designed CB X Pasting Machines!

The CB 67 X is supplied with the Stand UG 70-67 N and is the next step into the world of professional Pasting Machines. It is suitable for pasting all wallpapers up to 22 inch in width.

The newly designed tapered paste box of the X-series Pasting Machines feeds paste directly to the paste roller 30% more efficiently than its N series predecessors. The results are less frequent refills and greater output per fill up without increasing the size of the paste box.

The tapered design also reduces the amount of residual paste on the perimeter of the paste box, which aids in keeping the machine cleaner during operation and makes its final cleaning quicker and easier.

The CB X Series design utilizes a single roller pasting system in which the roller, rather than a scraper bar, is adjusted to control paste levels. The machine is entirely friction driven, requiring no gears for the pasting process. The result is a very lightweight but highly durable Pasting Machine that provides precise results and is easy to maintain.

Manufactured from corrosion-resistant materials using state-of-the-art machinery and highly-skilled technicians for long service life, guaranteed precision and unmatched quality. Combined with the GT 67 Ni or GT 70 Fi Equipment-Table, the machine and table become a mobile work station that can be easily moved in tandem around the jobsite.



CB 67 X

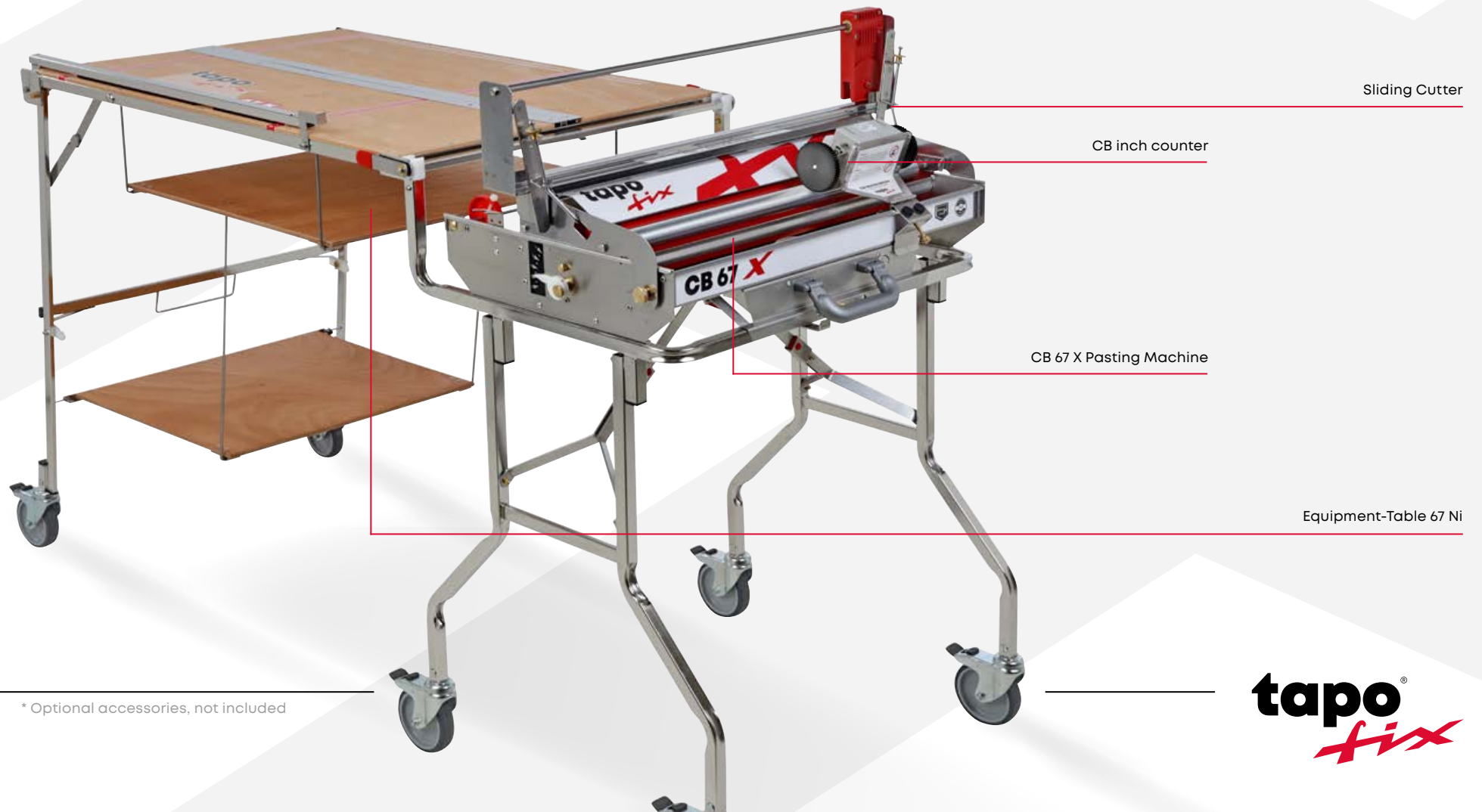
PASTING MACHINE CB 67 X

| Art. | Dimensions | Weight |
|-------|-----------------------|----------|
| CB67X | 27,0 x 21,0 x 10,0 in | 35,5 lbs |

Benefits

- + easy to use
- + even paste application
- + mobile
- + light weight

CB 67 X Accessories*



* Optional accessories, not included

tapo[®]
fix

CB 67 X Accessories



Equipment-Table 67 Ni

The 67 Ni Equipment-Table attaches directly to the CB 67 X providing a 24" x 35" working area and two lower shelves for storage of tools and materials. A slotted stainless steel cutting guide and an adjustable stop bar are installed on the table which can be used in conjunction with the vertical and horizontal inch scales marked on the table's surface to facilitate quick and easy cutting of booked panels of wallcovering to specific widths. The tables locking casters enable the table and stand to be moved together as a single unit while connected. The table can be folded up and hung on the stand for easy transport. The table is solidly constructed of durable, lacquered wood and stainless steel.



Equipment-Table 70 Fi

The CB 67 X Pasting Machine (without stand) can be mounted on top of the GT 70 Fi Equipment-Table using the table's built-in bracket that quickly connects the table to the machine and provides a safe and sturdy connection between the two pieces of equipment. The Equipment-Table has a slotted stainless steel cutting guide and markings scaled in inches for cutting pasted wallpaper to the desired widths. Locking casters ensure the table stays in place while in use and facilitates easy mobility around the job site while remaining fully set up. The table measures 24" x 79" and can be easily folded in half for storage and transport. It comes equipped with a cut out hand hole for ergonomic carrying. Even in narrow stairwells, you don't bump into the steps or walls. Constructed of aluminum and lacquered wood, this table can withstand loads of up to 200 lbs.

EQUIPMENT-TABLES

| Art. | Dimensions | Weight |
|--------|-----------------------|----------|
| GT67Ni | 26,0 x 38,5 x 35,5 in | 37,5 lbs |
| GT70Fi | 24,0 x 79,0 x 35,5 in | 39,5 lbs |

Wood Case 67 N

The Wood Case is the best option for safely storing and transporting the Pasting Machine. Solidly hand-crafted from real wood, the Wood Case comes equipped with an ergonomic carrying handle and includes dedicated interior compartments for storing the CB inch counter, cutting knife and other accessories.



WOOD CASE 67 N

| Art. | Dimensions | Weight |
|-------|----------------------|----------|
| HK67N | 27,5 x 18,0 x 8,0 in | 15,5 lbs |



CB inch counter

The CB inch counter makes it possible to quickly and easily cut material to exact lengths in inches while pulling the material through the Pasting Machine. The counter eliminates the need for measuring the wallpaper on the table and is an extreme labor and time saver. Utilizing a bracket made of stainless steel, the CB inch counter quickly attaches to all CB and S Series Pasting Machines and all Universal Dispensers.

CB INCH COUNTER

| Art. | Dimensions | Weight |
|-------|--------------------|---------|
| MZCBI | 7,0 x 5,5 x 4,0 in | 1,5 lbs |

Sliding Cutter 67-70

The Sliding Cutter replaces the circular knife which is supplied with the Pasting Machine. The Sliding Cutter can be mounted on the machine with just two screws.

With a single quick motion, the Sliding Cutter makes a perfectly straight and clean cut, every time. With the Sliding Cutter, the working speed can be significantly increased, as there is no need to reach for the cutting knife for each cut or to replace it after each use. The blade is made of hardened steel, razor sharp and Teflon coated, ensuring precise cuts with every use and a long service life.



SLIDING CUTTER 67-70

| Art. | Dimensions | Weight |
|---------|---------------------|---------|
| SW67-70 | 31,0 x 3,0 x 7,0 in | 4,0 lbs |

CB 67 X



tapo[®]
fix

CB 75 Xa PASTING MACHINE

Less in, more out! The newly designed CB X Pasting Machines!

The CB 75 Xa is supplied with the Stand UG 75 N and is the next step up into the world of professional Pasting Machines. It is suitable for pasting all wallpapers up to 32 inch in width. Supplied with an anodized aluminum paste roller for added durability and resistance to heat exposure.

The newly designed tapered paste box of the X-series Pasting Machines feeds paste directly to the paste roller 30% more efficiently than its N series predecessors. The results are less frequent refills and greater output per fill up without increasing the size of the paste box. The tapered design also reduces the amount of residual paste on the perimeter of the paste box, which aids in keeping the machine cleaner during operation and makes its final cleaning quicker and easier.

The CB X Series design utilizes a single roller pasting system in which the roller, rather than a scraper bar, is adjusted to control paste levels. The machine is entirely friction driven, requiring no gears for the pasting process. The result is a very lightweight but highly durable Pasting Machine that provides precise results and is easy to maintain.

Manufactured from corrosion-resistant materials using state-of-the-art machinery and highly-skilled technicians for long service life, guaranteed precision and unmatched quality. Combined with the GT 75 Ni or GT 80 Fi Equipment-Table, the machine and table become a mobile work station that can be easily moved in tandem around the jobsite.



CB 75 Xa

PASTING MACHINE CB 75 Xa

| Art. | Dimensions | Weight |
|--------|-----------------------|----------|
| CB75Xa | 35,5 x 21,5 x 10,0 in | 46,5 lbs |

Benefits

- + anodised aluminum paste roller
- + even paste application
- + mobile
- + lots of accessories

CB 75 Xa Accessories*



* Optional accessories, not included

CB 75 Xa Accessories



Equipment-Tables GT 75 Ni / 75 K

The short Equipment-Table 75 K is a useful supplement for working on the Pasting Machine. Measuring only 15 inches in depth, The short Equipment-Table 75 K provides a convenient, lightweight and space-saving work space for booking and cutting materials. The table attaches directly to the stand and has three height adjustment settings. When not in use, the table can be reversed to face the other direction, providing a storage shelf and making the entire machine + table setup easier to store.

The 75 Ni Equipment-Table attaches directly to the UG 75 N stand providing a 35" x 35" working area and two lower shelves for storage of tools and materials. A slotted stainless steel cutting guide and an adjustable stop bar are installed on the table which can be used in conjunction with the vertical and horizontal inch scales marked on the table's surface to facilitate quick and easy cutting of booked panels of wallcovering to specific widths. The tables locking casters enable the table and stand to be moved together as a single unit while connected. The table can be folded up and hung on the stand for easy transport. The table is solidly constructed of durable, lacquered wood and stainless steel.

EQUIPMENT-TABLES

| Art. | Dimensions | Weight |
|--------|-----------------------|----------|
| GT75K | 15,0 x 35,5 x 7,0 in | 3,5 lbs |
| GT75Ni | 35,0 x 35,0 x 35,5 in | 40,0 lbs |



Equipment-Tables GT 70 Fi (with Table-Widening 70 F) / 80 Fi

The CB 75 Xa Pasting Machine can be mounted on top of the GT 80 Fi Equipment-Table using the table's built-in bracket that quickly connects the table to the machine and provides a safe and sturdy connection between the two pieces of equipment. Optionally, the machine's UG 75 N Stand is designed to attach directly to the GT 80 Fi, allowing for a greater amount of table-top space to be utilized while still having the machine connected directly to the table. The Equipment-Table has a slotted stainless steel cutting guide and markings scaled in inches for cutting pasted wallpaper to the desired widths. Locking casters ensure the table stays in place while in use and facilitates easy mobility around the job site while remaining fully set up. The table measures 34.5" x 79" and can be easily folded in half for storage and transport. It comes equipped with a cut out hand hole for ergonomic carrying. Even in narrow stairwells, you don't bump into the steps or walls. Constructed of aluminum and lacquered wood, this table can withstand loads of up to 200 lbs.

Supplemented by the Table-Widening 70 F, the Equipment-Table 70 Fi can be enlarged to a working width of 31 inches. The combination of table and widening accessory can be used for working with the CB 75 Xa.

EQUIPMENT-TABLES

| Art. | Dimensions | Weight |
|-----------|-----------------------|----------|
| GT70Fi | 24,0 x 79,0 x 35,5 in | 39,5 lbs |
| GT80Fi | 34,5 x 79,0 x 35,5 in | 50,5 lbs |
| TVB-GT70F | 7,0 x 79,0 x 7,0 in | 14,0 lbs |

CB 75 Xa Accessories



Swivel 3275

Another innovation in ergonomics by tapo-fix, the CB 75 Xa can be combined with the Swivel 3275. The swivel connects directly to the bottom of the machine and can then be attached to the mobile stand or on the GT 80 Fi Equipment-Table. The machine can now be turned in both directions, which avoids having to bend over the booking table while pulling material through the machine. The work process is therefore much more ergonomic, causing less fatigue on the lower back, arms and shoulders and enabling quicker and more fluid motions in the pasting process. The swivel can also be locked in the middle position when rotation is not desired.

SWIVEL 3275

| Art. | Dimensions | Weight |
|---------|----------------------|---------|
| SWL3275 | 35,5 x 12,0 x 2,5 in | 9,5 lbs |

Wood Case 75 N

The Wood Case is the best option for safely storing and transporting the Pasting Machine. Solidly hand-crafted from real wood, the Wood Case comes equipped with an ergonomic carrying handle and includes dedicated interior compartments for storing the CB inch counter, cutting knife and other accessories.



WOOD CASE 75 N

| Art. | Dimensions | Weight |
|-------|-----------------------|----------|
| HK75N | 38,0 x 23,0 x 11,0 in | 33,0 lbs |



CB inch counter

The CB inch counter makes it possible to quickly and easily cut material to exact lengths in inches while pulling the material through the Pasting Machine. The counter eliminates the need for measuring the wallpaper on the table and is an extreme labor and time saver. Utilizing a bracket made of stainless steel, the CB inch counter quickly attaches to all CB and S Series Pasting Machines and all Universal Dispensers.

CB INCH COUNTER

| Art. | Dimensions | Weight |
|-------|--------------------|---------|
| MZCBI | 7,0 x 5,5 x 4,0 in | 1,5 lbs |

Sliding Cutter 75-800

The Sliding Cutter replaces the circular knife which is supplied with the Pasting Machine. The Sliding Cutter can be mounted on the machine with just two screws. With a single quick motion, the Sliding Cutter makes a perfectly straight and clean cut, every time. With the Sliding Cutter, the working speed can be significantly increased, as there is no need to reach for the cutting knife for each cut or to replace it after each use. The blade is made of hardened steel, razor sharp and Teflon coated, ensuring precise cuts with every use and a long service life.



SLIDING CUTTER 75-800

| Art. | Dimensions | Weight |
|----------|---------------------|---------|
| SW75-800 | 42,0 x 3,0 x 7,0 in | 6,0 lbs |



topo
Active

CB 7



75



tapo[®]
fix

CB 1000 X α PASTING MACHINE

Less in, more out! The newly designed CB X Pasting Machines!

The CB 1000 X α is supplied with the Stand UG 1000 N and has the widest operating width of the CB X Series Pasting Machines. It is suitable for pasting all wallpapers up to 41 inch in width. Supplied with an anodized aluminum paste roller for added durability and resistance to heat exposure.

The newly designed tapered paste box of the X-series Pasting Machines feeds paste directly to the paste roller 30% more efficiently than its N series predecessors. The results are less frequent refills and greater output per fill up without increasing the size of the paste box.

The tapered design also reduces the amount of residual paste on the perimeter of the paste box, which aids in keeping the machine cleaner during operation and makes its final cleaning quicker and easier.

The CB X Series design utilizes a single roller pasting system in which the roller, rather than a scraper bar, is adjusted to control paste levels. The machine is entirely friction driven, requiring no gears for the pasting process. The result is a very lightweight but highly durable Pasting Machine that provides precise results and is easy to maintain.

Manufactured from corrosion-resistant materials using state-of-the-art machinery and highly-skilled technicians for long service life, guaranteed precision and unmatched quality. Combined with the GT 1000 Ni Equipment-Table, the machine and table become a mobile work station that can be easily moved in tandem around the jobsite.



CB 1000 X α

PASTING MACHINE CB 1000 X α

| Art. | Dimensions | Weight |
|------------------|-----------------------|----------|
| CB1000X α | 45,5 x 21,5 x 10,0 in | 60,5 lbs |

Benefits

- + anodised aluminum paste roller
- + even paste application
- + mobile
- + lots of accessories

CB 1000 Xa Accessories*



* Optional accessories, not included

CB 1000 Xa Accessories



Equipment-Table GT 80 Fi (with Table-Widening 70 F)

Supplemented by the TVB-GT70F Table-Widening accessory, the Equipment-Table 80 Fi can be enlarged to a working width of 41 inches. The combination of table and widening accessory can be used for working with the CB 1000 Xa.

EQUIPMENT TABLES

| Art. | Dimensions | Weight |
|-----------|-----------------------|----------|
| GT80Fi | 34,5 x 79,0 x 35,5 in | 50,5 lbs |
| TVB-GT70F | 7,0 x 79,0 x 7,0 in | 14,0 lbs |



Equipment-Tables GT 1000 K / 1000 Ni

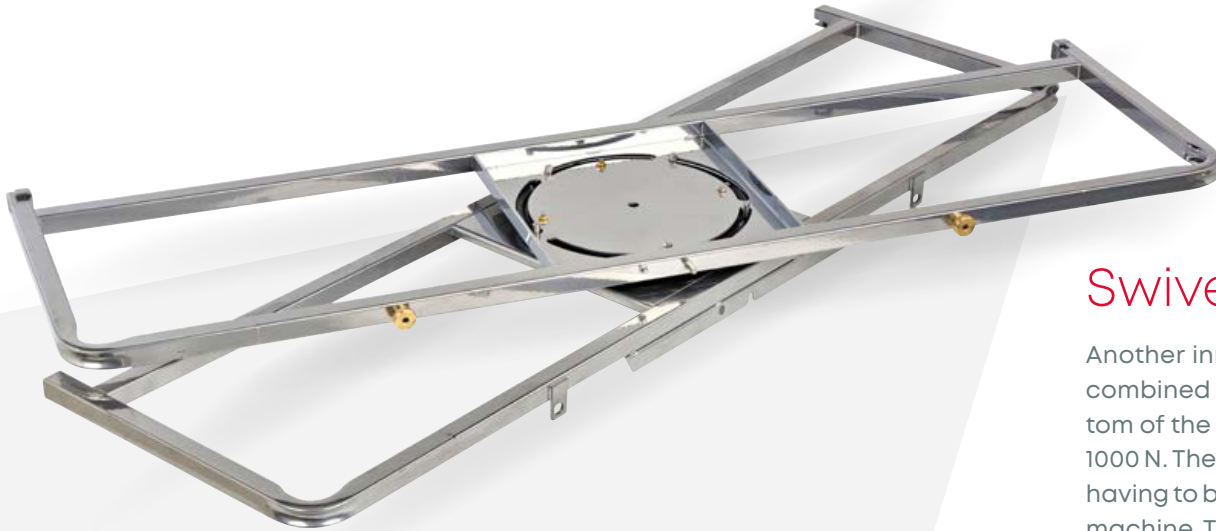
Measuring only 15 inches in depth, the short Equipment-Table 1000 K provides a convenient, lightweight and space-saving work space for booking and cutting materials. The table attaches directly to the stand and has three height adjustment settings. When not in use, the table can be reversed to face the other direction, providing a storage shelf and making the entire machine + table setup easier to store.

The 1000 Ni Equipment-Table attaches directly to the UG 1000 N stand providing a 35" x 44" working area and two lower shelves for storage of tools and materials. A slotted stainless steel cutting guide and an adjustable stop bar are installed on the table which can be used in conjunction with the vertical and horizontal inch scales marked on the table's surface to facilitate quick and easy cutting of booked panels of wallcovering to specific widths. The tables locking casters enable the table and stand to be moved together as a single unit while connected. The table can be folded up and hung on the stand for easy transport. The table is solidly constructed of durable, lacquered wood and stainless steel.

EQUIPMENT-TABLES

| Art. | Dimensions | Weight |
|----------|-----------------------|----------|
| GT1000K | 15,0 x 45,5 x 7,0 in | 4,5 lbs |
| GT1000Ni | 44,0 x 35,0 x 35,5 in | 46,0 lbs |

CB 1000 Xa Accessories



Swivel 4010

Another innovation in ergonomics by tapo-fix, the CB 1000 Xa can be combined with the Swivel 4010. The swivel connects directly to the bottom of the machine and can then be attached to the mobile stand UG 1000 N. The machine can now be turned in both directions, which avoids having to bend over the booking table while pulling material through the machine. The work process is therefore much more ergonomic, causing less fatigue on the lower back, arms and shoulders and enabling quicker and more fluid motions in the pasting process. The swivel can also be locked in the middle position when rotation is not desired.

SWIVEL 4010

| Art. | Dimensions | Weight |
|---------|----------------------|---------|
| SWL4010 | 45,5 x 12,0 x 2,5 in | 8,0 lbs |

Wood Case 1000 N

The Wood Case is the best option for safely storing and transporting the Pasting Machine. Solidly hand-crafted from real wood, the Wood Case comes equipped with an ergonomic carrying handle and includes dedicated interior compartments for storing the CB inch Counter, cutting knife and other accessories.



WOOD CASE 1000 N

| Art. | Dimensions | Weight |
|---------|-----------------------|----------|
| HK1000N | 47,0 x 23,0 x 11,0 in | 37,5 lbs |



CB inch counter

The CB inch counter makes it possible to quickly and easily cut material to exact lengths in inches while pulling the material through the Pasting Machine. The counter eliminates the need for measuring the wallpaper on the table and is an extreme labor and time saver. Utilizing a bracket made of stainless steel, the CB inch counter quickly attaches to all CB and S Series Pasting Machines and all Universal Dispensers.

CB INCH COUNTER

| Art. | Dimensions | Weight |
|-------|--------------------|---------|
| MZCBI | 7,0 x 5,5 x 4,0 in | 1,5 lbs |

Sliding Cutter 1000

The Sliding Cutter replaces the circular knife which is supplied with the Pasting Machine. The Sliding Cutter can be mounted on the machine with just two screws. With a single quick motion, the Sliding Cutter makes a perfectly straight and clean cut, every time. With the Sliding Cutter, the working speed can be significantly increased, as there is no need to reach for the cutting knife for each cut or to replace it after each use. The blade is made of hardened steel, razor sharp and Teflon coated, ensuring precise cuts with every use and a long service life.



SLIDING CUTTER 1000

| Art. | Dimensions | Weight |
|--------|---------------------|----------|
| SW1000 | 49,5 x 3,0 x 7,0 in | 12,0 lbs |

„ As a professional wallpaper installer, having the best equipment is a top priority. I use the latest **tapo-fix** Wallpaper Pasting Machines, which provide for the highest quality installations. “

KATIE HUNT

BRAND AMBASSADOR TAPO-FIX GMBH & CO. KG

WWW.KATIESWALLPAPER.CA

INSTAGRAM: @KATIESWALLPAPER





” From standard 20.5” or 27” wallpapers, to Natural Wallcoverings, such as Silks and Grasscloths, and even 54” Commercial Vinyls, there is a **tapo-fix** Machine that is perfect for any wall-paper, with faster installations, and better results. “

CASE-SETS 70 Xi / 67 Xi / 75 Xia / 1000 Xia

CASE-SET CBK 70 Xi

The Case-Set contains the CB 70 X Pasting Machine, the HK 70 N Wood Case, the CB inch counter, a folding ruler, an apron and a circular cutting knife with replacement blades.



CASE-SET CBK 70 Xi

| Art. | Dimensions | Weight |
|---------|----------------------|----------|
| CBK70Xi | 27,5 x 18,0 x 8,0 in | 38,5 lbs |

CASE-SET CBK 67 Xi

The Case-Set contains the CB 67 X Pasting Machine with UG 67 N Stand, the HK 67 N Wood Case, the CB inch counter, a folding ruler, an apron and a circular cutting knife with replacement blades.



CASE-SET CBK 67 Xi

| Art. | Dimensions | Weight |
|---------|----------------------|----------|
| CBK67Xi | 27,5 x 18,0 x 8,0 in | 62,0 lbs |

CASE-SETS

CASE-SET CBK 75 Xia

The Case-Set contains the CB 75 Xa Pasting Machine with UG 75 N Stand, the HK 75 N Wood Case, the CBinch counter, a folding ruler, an apron and a circular cutting knife with replacement blades.



CASE-SET CBK 75 Xia

| Art. | Dimensions | Weight |
|----------|-----------------------|----------|
| CBK75Xia | 38,0 x 23,0 x 11,0 in | 82,0 lbs |

CASE-SET CBK 1000 Xia

The Case-Set contains the CB 1000 Xa Pasting Machine with UG 1000 N Stand, the HK 1000 N Wood Case, the CBinch counter, a folding ruler, an apron and a circular cutting knife with replacement blades.



CASE-SET CBK 1000 Xia

| Art. | Dimensions | Weight |
|------------|-----------------------|-----------|
| CBK1000Xia | 47,0 x 23,0 x 11,0 in | 107,0 lbs |



1000 X





tapo[®]
fix

CB AQUA N PASTING MACHINE

The CB Aqua N Pasting Machine is designed for processing materials with water-activated paste on the back. It is supplied with a Stand UG 75 N and is designed for use with material up to 41 inches in width. The water separator can be infinitely adjusted to finely tune the amount of moisture being applied to the material as it is being pulled through the machine. Stainless steel construction provides long service life and durability.



CB AQUA N

CB AQUA N PASTING MACHINE

| Art. | Dimensions | Weight |
|---------|-----------------------|----------|
| CBAQUAN | 44,0 x 21,5 x 12,0 in | 46,0 lbs |

Benefits

- + stainless steel
- + for adhesive-backed wallpaper
- + mobile
- + can be combined with tables

CB AQUA N Accessories*



Equipment-Table GT 1000 Ni

CB inch counter

CB Aqua N Pasting Machine

* Optional accessories, not included

CB AQUA N Accessories

Equipment-Table GT 1000 Ni

The 1000 Ni Equipment-Table attaches directly to the UG 75 N stand providing a 35" x 44" working area and two lower shelves for storage of tools and materials. A slotted stainless steel cutting guide and an adjustable stop bar are installed on the table which can be used in conjunction with the vertical and horizontal inch scales marked on the table's surface to facilitate quick and easy cutting of booked panels of wallcovering to specific widths. The table's locking casters enable the table and stand to be moved together as a single unit while connected. The table can be folded up and hung on the stand for easy transport. The table is solidly constructed of durable, lacquered wood and stainless steel.

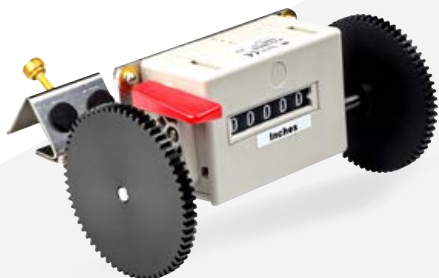


Equipment-Table GT 80 Fi (with Table-Widening 70 F)

Supplemented by the TVB-GT70F Table-Widening accessory, the Equipment-Table 80 Fi can be enlarged to a working width of 41 inches. The combination of table and widening accessory can be used for working with the CB Aqua N.

EQUIPMENT-TABLES

| Art. | Dimensions | Weight |
|-----------|-----------------------|----------|
| GT1000Ni | 44,0 x 35,0 x 35,5 in | 46,0 lbs |
| GT80Fi | 34,5 x 80,0 x 35,5 in | 50,5 lbs |
| TVB-GT70F | 7,0 x 80,0 x 7,0 in | 14,0 lbs |



CB inch counter

The CB inch counter makes it possible to quickly and easily cut material to exact lengths in inches while pulling the material through the Pasting Machine. The counter eliminates the need for measuring the wallpaper on the table and is an extreme labor and time saver. Utilizing a bracket made of stainless steel, the CB inch counter quickly attaches to all CB and S Series Pasting Machines and all Universal Dispensers.

CB INCH COUNTER

| Art. | Dimensions | Weight |
|-------|--------------------|---------|
| MZCBI | 7,0 x 5,5 x 4,0 in | 1,5 lbs |



AT inch counter

The AT inch counter is a single-wheeled meter that can be used with the CB Aqua N or any of the Universal Dispensers. The AT inch counter provides all the same benefits of its CB inch meter counterpart with the added benefits of being more compact, lighter in weight and is a more economical option when a single-wheeled counter is sufficient for the job.

AT INCH COUNTER

| Art. | Dimensions | Weight |
|-------|--------------------|---------|
| MZATI | 7,0 x 3,5 x 4,0 in | 1,0 lbs |

tapo

fix





tapo[®]
fix

S2032 PASTING MACHINE

The S2032 Pasting Machine is a table top mounted machine suitable for pasting all wallcoverings up to 32 inches in width. The geared dual roller pasting system of the S-series Pasting Machines is designed to flawlessly work with high viscosity pastes. The gears are shielded by an internal stainless-steel housing within the paste box so that paste residue does not build on the gears reducing performance. All working parts of the machine easily detach from the paste box for quick and easy cleaning. Locking lid with quick-release thumb lever holds materials securely in position while being processed through the machine.

Sliding material brackets which insert into channels on the front of the machine facilitate quick and easy loading of material to be pasted. The unique design of the S-Series unique allows for the paste applicator roller to be reversed so that the roller can evenly apply activator to pre-pasted wallcoverings. Paste adjustments are controlled by a single lever which facilitates even and precise paste levels via a stainless-steel scraper bar.

The machine is made of corrosion-resistant materials and assembled with the utmost precision by high-tech machines and expert mechanics. S-Series Pasting Machines can be converted to standing machines with the addition of optional stainless-steel folding stands with locking casters.



PASTING MACHINE S2032

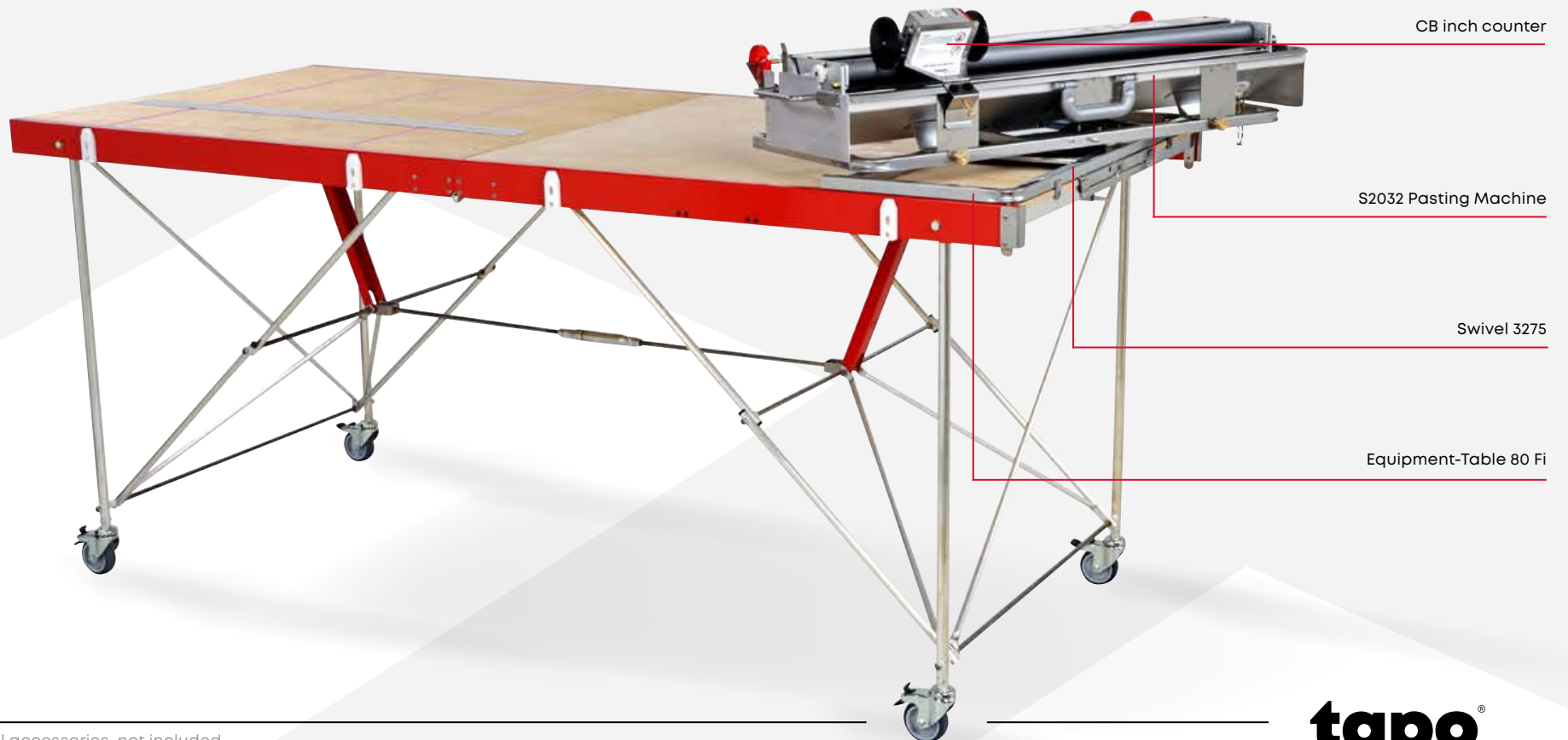
| Art. | Dimensions | Weight |
|-------|----------------------|----------|
| S2032 | 35,5 x 14,0 x 6,0 in | 35,0 lbs |

S2032

Benefits

- + anodised aluminum paste roller
- + even paste application
- + gear driven for viscous paste
- + lots of accessories

S2032 Accessories*



* Optional accessories, not included

S2032 Accessories



Equipment-Tables GT 75 K / 75 Ni

Measuring only 15 inches in depth, The short Equipment-Table 75 K provides a convenient, lightweight and space-saving work space for booking and cutting materials. The table attaches directly to the stand and has three height adjustment settings. When not in use, the table can be reversed to face the other direction, providing a storage shelf and making the entire machine + table setup easier to store.

The 75 Ni Equipment-Table attaches directly to the MST2032 stand providing a 35" x 35" working area and two lower shelves for storage of tools and materials. A slotted stainless steel cutting guide and an adjustable stop bar are installed on the table which can be used in conjunction with the vertical and horizontal inch scales marked on the table's surface to facilitate quick and easy cutting of booked panels of wallcovering to specific widths. The table's locking casters enable the table and stand to be moved together as a single unit while connected. The table can be folded up and hung on the stand for easy transport. The table is solidly constructed of durable, lacquered wood and stainless steel.

EQUIPMENT-TABLES

| Art. | Dimensions | Weight |
|--------|-----------------------|----------|
| GT75K | 15,0 x 35,5 x 7,0 in | 3,5 lbs |
| GT75Ni | 35,0 x 35,0 x 35,5 in | 40,0 lbs |



Equipment-Tables GT 80 Fi / 70 Fi (with Table-Widening 70 F)

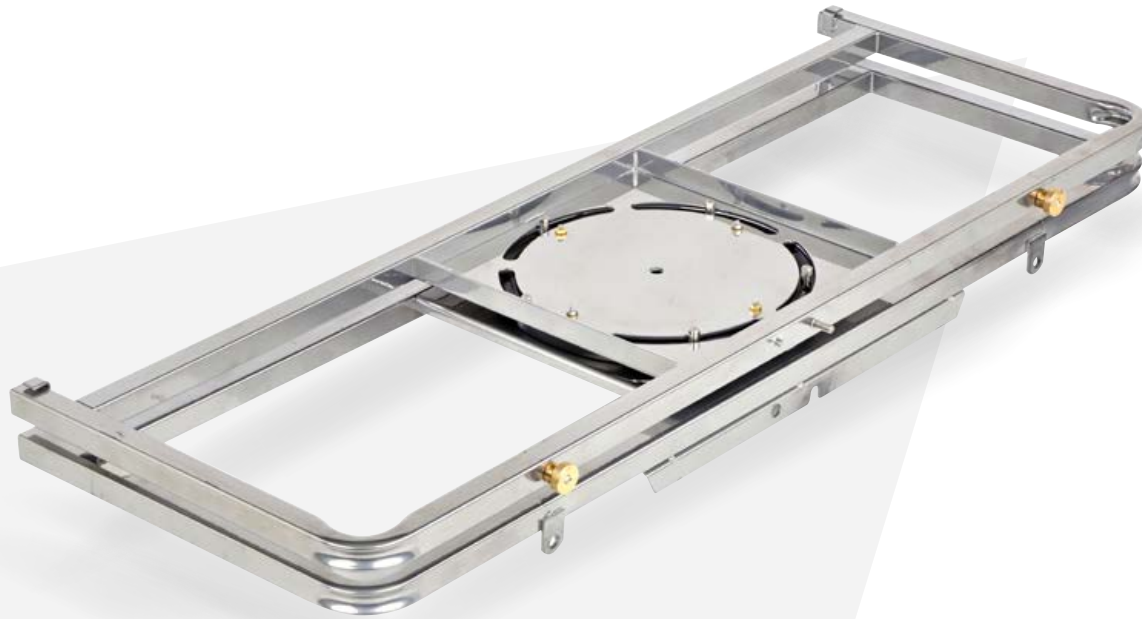
The S2032 Pasting Machine can be mounted on top of the GT 80 Fi Equipment-Table using the table's built-in bracket that quickly connects the table to the machine and provides a safe and sturdy connection between the two pieces of equipment. Optionally, the machine's MST2032 Stand is designed to attach directly to the GT 80 Fi, allowing for a greater amount of table-top space to be utilized while still having the machine connected directly to the table. The Equipment-Table has a slotted stainless steel cutting guide and markings scaled in inches for cutting pasted wallpaper to the desired widths. Locking casters ensure the table stays in place while in use and facilitates easy mobility around the job site while remaining fully set up. The table measures 34.5" x 79" and can be easily folded in half for storage and transport. It comes equipped with a cut out hand hole for ergonomic carrying. Even in narrow stairwells, you don't bump into the steps or walls. Constructed of aluminum and lacquered wood, this table can withstand loads of up to 200 lbs.

Supplemented by the Table-Widening 70 F, the Equipment-Table 70 Fi can be enlarged to a working width of 31 inches. The combination of table and widening accessory can be used for working with the S2032, when mounted on the MST2032 stand.

EQUIPMENT-TABLES

| Art. | Dimensions | Weight |
|-----------|-----------------------|----------|
| TVB-GT70F | 7,0 x 79,0 x 7,0 in | 14,0 lbs |
| GT70Fi | 24,0 x 79,0 x 35,5 in | 39,5 lbs |
| GT80Fi | 34,5 x 79,0 x 35,5 in | 50,5 lbs |

S2032 Accessories



Swivel 3275

Another innovation in ergonomics by tapo-fix, the The S2032 can be combined with the Swivel 3275. The swivel connects directly to the bottom of the machine and can then be attached to the mobile stand or on the GT 80 Fi Equipment-Table. The machine can now be turned in both directions, which avoids having to bend over the booking table while pulling material through the machine. The work process is therefore much more ergonomic, causing less fatigue on the lower back, arms and shoulders and enabling quicker and more fluid motions in the pasting process. The swivel can also be locked in the middle position when rotation is not desired.

SWIVEL 3275

| Art. | Dimensions | Weight |
|---------|----------------------|---------|
| SWL3275 | 35,5 x 12,0 x 3,0 in | 9,5 lbs |



Stand MST2032

The MST2032 stand turns the table-top machine into a standing machine. The stand is solidly designed and entirely constructed from stainless steel. Large locking casters facilitate quick and easy mobility and safe parking of the machine. The stand is designed to quickly attach to the optional Equipment-Tables and SWL3275 Swivel.

STAND MST2032

| Art. | Dimensions | Weight |
|---------|-----------------------|----------|
| MST2032 | 26,5 x 21,5 x 10,0 in | 14,5 lbs |

Wood Case S2032

The Wood Case is the best option for safely storing and transporting the Pasting Machine. Solidly hand-crafted from real wood, the Wood Case comes equipped with an ergonomic carrying handle and includes dedicated interior compartments for storing the CB inch counter, cutting knife and other accessories.



WOOD CASE S2032

| Art. | Dimensions | Weight |
|--------|-----------------------|----------|
| HK2032 | 38,0 x 23,0 x 11,0 in | 33,0 lbs |



CB inch counter

The CB inch counter makes it possible to quickly and easily cut material to exact lengths in inches while pulling the material through the Pasting Machine. The counter eliminates the need for measuring the wallpaper on the table and is an extreme labor and time saver. Utilizing a bracket made of stainless steel, the CB inch counter quickly attaches to all CB and S Series Pasting Machines and all Universal Dispensers.

CB INCH COUNTER

| Art. | Dimensions | Weight |
|-------|--------------------|---------|
| MZCBI | 7,0 x 5,5 x 4,0 in | 1,5 lbs |



apoo

fix

tapoo[®]
fix

S2040 PASTING MACHINE

The S2040 Pasting Machine is a table top mounted machine suitable for pasting all wallcoverings up to 40 inches in width. The geared dual roller pasting system of the S-series Pasting Machines is designed to flawlessly work with high viscosity pastes. The gears are shielded by an internal stainless-steel housing within the paste box so that paste residue does not build on the gears reducing performance. All working parts of the machine easily detach from the paste box for quick and easy cleaning. Locking lid with quick-release thumb lever holds materials securely in position while being processed through the machine. Sliding material brackets which insert into channels on the front of the machine facilitate quick and easy loading of material to be pasted

The unique design of the S-Series unique allows for the paste applicator roller to be reversed so that the roller can evenly apply activator to pre-pasted wallcoverings. Paste adjustments are controlled by a single lever which facilitates even and precise paste levels via a stainless-steel scraper bar. The machine is made of corrosion-resistant materials and assembled with the utmost precision by high-tech machines and expert mechanics.

S-Series Pasting Machines can be converted to standing machines with the addition of an optional stainless-steel folding stand with locking casters.



S2040

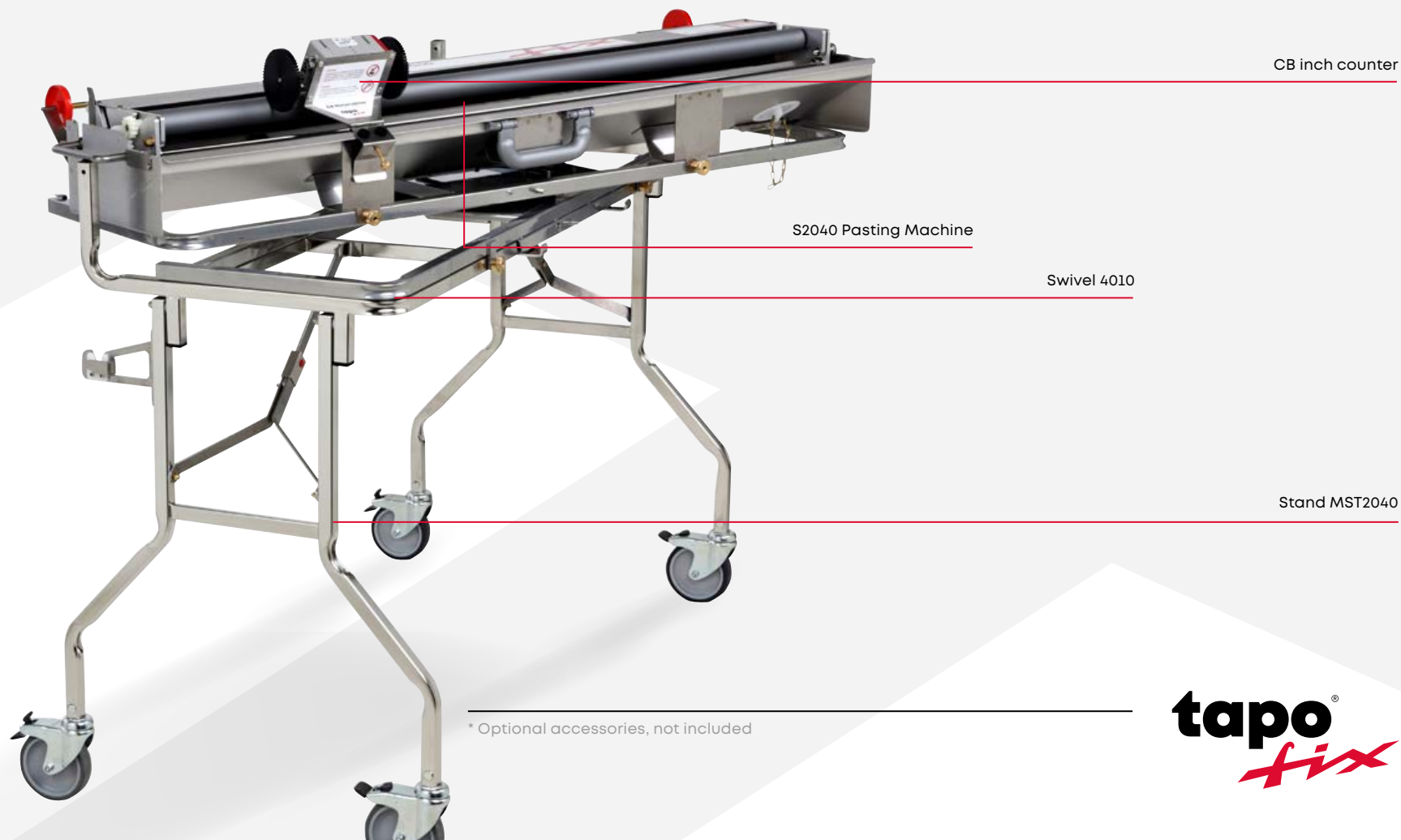
PASTING MACHINE S2040

| Art. | Dimensions | Weight |
|-------|----------------------|----------|
| S2040 | 43,5 x 14,0 x 6,0 in | 44,0 lbs |

Benefits

- + anodised aluminum paste roller
- + even paste application
- + gear driven for viscous paste
- + lots of accessories

S2040 Accessories*



* Optional accessories, not included

S2040 Accessories



Equipment-Tables GT 1000 K / 1000 Ni

The short Equipment-Table 1000 is a useful supplement for working on the Pasting Machine. Measuring only 15 inches in depth, The short Equipment-Table 1000 K provides a convenient, lightweight and space-saving work space for booking and cutting materials. The table attaches directly to the stand and has three height adjustment settings. When not in use, the table can be reversed to face the other direction, providing a storage shelf and making the entire machine + table setup easier to store.

The 1000 Ni Equipment-Table attaches directly to the MST2040 stand providing a 35" x 44" working area and two lower shelves for storage of tools and materials. A slotted stainless steel cutting guide and an adjustable stop bar are installed on the table which can be used in conjunction with the vertical and horizontal inch scales marked on the table's surface to facilitate quick and easy cutting of booked panels of wallcovering to specific widths. The tables locking casters enable the table and stand to be moved together as a single unit while connected. The table can be folded up and hung on the stand for easy transport. The table is solidly constructed of durable, lacquered wood and stainless steel.

EQUIPMENT-TABLES

| Art. | Dimensions | Weight |
|----------|-----------------------|----------|
| GT1000K | 15,0 x 45,5 x 7,0 in | 4,5 lbs |
| GT1000NI | 44,0 x 35,0 x 35,5 in | 46,0 lbs |



Equipment-Table GT 80 Fi (with Table-Widening 70 F)

Supplemented by the TVB-GT70F Table-Widening accessory, the Equipment-Table 80 Fi can be enlarged to a working width of 41 inches. The combination of table and widening accessory can be used for working with the S2040 Pasting Machine.

EQUIPMENT-TABLES

| Art. | Dimensions | Weight |
|-----------|-----------------------|----------|
| TVB-GT70F | 7,0 x 79,0 x 7,0 in | 14,0 lbs |
| GT80Fi | 34,5 x 79,0 x 35,5 in | 50,5 lbs |

S2040 Accessories



Swivel 4010

Another innovation in ergonomics by tapo-fix, the S2040 can be combined with the Swivel 4010. The swivel connects directly to the bottom of the machine and can then be attached to the mobile MST2040. The machine can now be turned in both directions, which avoids having to bend over the booking table while pulling material through the machine. The work process is therefore much more ergonomic, causing less fatigue on the lower back, arms and shoulders and enabling quicker and more fluid motions in the pasting process. The swivel can also be locked in the middle position when rotation is not desired.

SWIVEL 4010

| Art. | Dimensions | Weight |
|---------|----------------------|---------|
| SWL4010 | 45,5 x 12,0 x 3,0 in | 8,0 lbs |



Stand MST2040

The MST2040 stand turns the table-top machine into a standing machine. The stand is solidly designed and entirely constructed from stainless steel. Large locking casters facilitate quick and easy mobility and safe parking of the machine. The stand is designed to quickly attach to the optional Equipment-Tables and SWL4010 Swivel.

STAND MST2032

| Art. | Dimensions | Weight |
|---------|-----------------------|----------|
| MST2040 | 26,5 x 21,5 x 10,0 in | 14,5 lbs |

Wood Case S2040

The Wood Case is the best option for safely storing and transporting the Pasting Machine. Solidly hand-crafted from real wood, the Wood Case comes equipped with an ergonomic carrying handle and includes dedicated interior compartments for storing the CB inch counter, cutting knife and other accessories.



WOOD CASE S2040

| Art. | Dimensions | Weight |
|--------|-----------------------|----------|
| HK2040 | 47,0 x 23,0 x 11,0 in | 37,5 lbs |



CB inch counter

The CB inch counter makes it possible to quickly and easily cut material to exact lengths in inches while pulling the material through the Pasting Machine. The counter eliminates the need for measuring the wallpaper on the table and is an extreme labor and time saver. Utilizing a bracket made of stainless steel, the CB inch counter quickly attaches to all CB and S Series Pasting Machines and all Universal Dispensers.

CB INCH COUNTER

| Art. | Dimensions | Weight |
|-------|--------------------|---------|
| MZCBI | 7,0 x 5,5 x 4,0 in | 1,5 lbs |

„ Since having moved to the United States, as a second generation installer, **nothing has been more important to me than providing excellent quality and service to my clients. Being able to use *tapo-fix* Pasting Machines makes this effortless. “**

MICHAEL „MIKE“ GEBHARDT
INSTAGRAM: @THE.GERMAN.PAINTER





„ **tapo-fix** Pasting Machines and tables are unparalleled to any other wallpaper tool. Growing up in Germany, my Dad taught me how to wallpaper on **tapo-fix** machines during my traditional german trade apprenticeship. Now living in the United States, I am proud to continue the tradition and continue providing the best quality. “

CB 56 PASTING MACHINE

The CB 56 Pasting Machine is designed for use with all wallcovering ups to 56 inches in width. Heavy-duty stainless-steel construction built to withstand the demands of everyday commercial use. The CB 56 has an external gear box that mechanically drives the feed roller in the paste box. The gearing system of the CB 56, combined with an internal spoiler plate in the paste box which help “cut” the paste, enables the machine to quickly and evenly distribute highly viscous paste to material with very little physical effort required.

The CB56 is able to process all types of pastes, even undiluted clay-based adhesive. The amount of adhesive being applied to materials can easily be adjusted to the exact level desired using a stainless-steel scraper bar with a single point adjustment. A built-in cutting edge combined with an attached inch counter (sold separately) enables neat right-angle cutting of materials to precise lengths.

Booking table, mobile floor stand with locking casters and material rod with adjustable material rod cones are included. Newly designed booking table allows for easy height adjustment to accommodate different height users.

New designed stainless-steel folding stand with locking casters enable the machine to be easily loaded and unloaded by a single operator. Thanks to the addition of a set of “gurney” style casters on the upper portion of the stand, a single person can easily load the stand and machine into a work truck or van without any lifting being required.



CB 56

PASTING MACHINE CB56

| Art. | Dimensions | Weight |
|------|-----------------------|-----------|
| CB56 | 61,0 x 33,5 x 15,5 in | 163,0 lbs |

Benefits

- + anodised aluminum paste roller
- + even paste application
- + gear driven for viscous paste
- + paste adjustment by adjustable scraper



CB Inch counter

CB 56 Pasting Machine

CB 56 Accessory*



CB 56 inch counter

The CB 56 inch counter makes it possible to quickly and easily cut material to exact lengths in inches while pulling the material through the Pasting Machine. The counter eliminates the need measuring the wallpaper on the table and is an extreme labor and time saver. Utilizing a bracket made of stainless steel, the CB 56 inch counter quickly attaches only to the CB 56.

CB 56 INCH COUNTER

| Art. | Dimensions | Weight |
|-------|--------------------|---------|
| MZ56i | 7,0 x 5,5 x 4,0 in | 1,5 lbs |

* Optional accessory, not included





wt

tapo[®]
fix

XS 60 PASTING MACHINE

The XS60 Pasting Machine is designed for use with all wallcovering ups to 60 inches in width. Heavy-duty stainless-steel construction built to withstand the demands of everyday commercial use. Internal gearing of the dual-roller pasting system allows for quick and easy processing and application of viscous pastes.

The amount of adhesive being applied to materials can easily be adjusted to the exact level desired using a stainless-steel scraper bar with a single point adjustment. A built-in cutting edge combined with an attached inch counter (sold separately) enables neat right-angle cutting of materials to precise lengths. Booking table, mobile floor stand with locking casters and material rod with adjustable material rod cones are included.

Newly designed booking table allows for easy height adjustment to accommodate different height users. Newly designed stainless-steel folding stand with locking casters enable the machine to be easily loaded and unloaded by a single operator. Thanks to the addition of a set of "gurney" style casters on the upper portion of the stand, a single person can easily load the stand and machine into a work truck or van without any lifting being required.



XS 60

PASTING MACHINE XS 60

| Art. | Dimensions | Weight |
|------|-----------------------|-----------|
| XS60 | 64,0 x 20,5 x 33,0 in | 134,0 lbs |

Benefits

- + anodised aluminum paste roller
- + even paste application
- + gear driven for viscous paste
- + paste adjustment by adjustable scraper

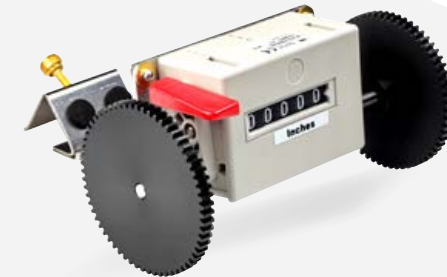


CB inch counter

XS 60 Pasting Machine

* Optional accessory, not included

XS 60 Accessory*



CB inch counter

The CB inch counter makes it easier to cut the wallpaper to exact lengths when pasting it in the machine. There is no need for measuring the wallpaper on the table. The CB inch counter fits all CB and S Series Pasting Machines and all Universal Dispensers. The bracket is made of stainless steel and the measurement is in inches.

CB INCH COUNTER

| Art. | Dimensions | Weight |
|-------|--------------------|---------|
| MZCBI | 7,0 x 5,5 x 4,0 in | 1,5 lbs |

„ In the third generation, I am responsible for implementing my grandfather's idea of simplifying the pasting and cutting of wallpaper with a machine, perfectly using modern materials and techniques. “

MORITZ HOHENHÖVEL
MANAGING OWNER TAPO-FIX GMBH & CO. KG
WWW.TAPOFIX.DE
INSTAGRAM: @TAPOFIX





„ In the 60 years since the company was founded, the possibilities of production have changed a lot. Together with my colleagues, I ensure that the highest quality and most durable Pasting Machines are manufactured with a mixture of excellent manual work and the most modern machines. The high quality that is essential for the professional user and our extensive customer service are our daily motivation and our obligation to our customers.

I am proud and happy that with the help of our partners we are now present on the American market and can offer our products to the many installers. “

PROfix DIY PASTING MACHINE

The PROfix is the entry-level machine for wallpapers up to 22 inches wide. It is made of stainless steel and has an adjustable roll holder and a cutting edge. The PROfix is supplied including the swivel to make the machine swivel on the table.



Benefits

- + light
- + stainless steel
- + swivel included
- + also suitable for rental

DIY PASTING MACHINE PROFIX

| Art. | Dimensions | Weight |
|--------|----------------------|----------|
| PROFIX | 26,0 x 11,5 x 5,5 in | 11,0 lbs |

PROfix

Benefits

- + light
- + stainless steel
- + table clamps
- + professional technology at an entry-level price

PROfix CS DIY PASTING MACHINE

The PROfix CS is the entry-level machine for wallpapers up to 22 inches wide. It is made of stainless steel and has an adjustable roll holder and a cutting edge.



DIY PASTING MACHINE PROFIX CS

| Art. | Dimensions | Weight |
|----------|----------------------|---------|
| PROFIXCS | 26,0 x 11,5 x 4,0 in | 9,0 lbs |

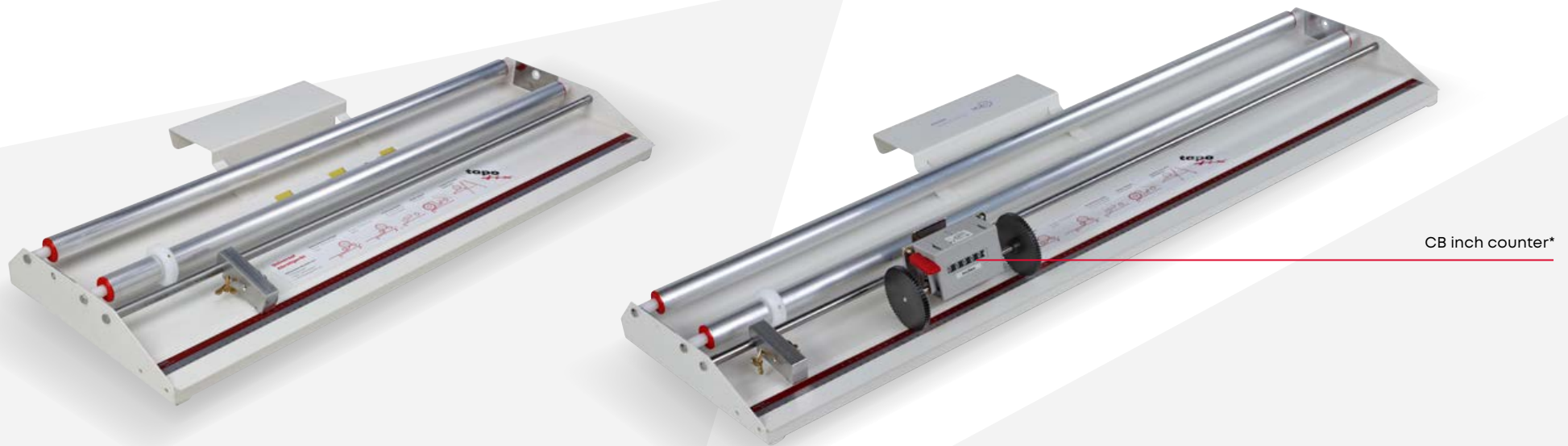
PROfix CS

tapo
fix

UNIVERSAL DISPENSERS 80i / 109i / 140i

Universal Dispensers provide a precise, clean and convenient means of dispensing, measuring and cutting wallcovering and other rolled goods which are up to 55 inches in width. Specifically designed for use with non-wovens and other materials which are installed using the “paste-the-wall” method, Universal Dispensers are also a very quick and convenient means of neatly dispensing materials which require hand-trimming onto your trimming surface and also work well for separating and organizing large rolls of material into individual panels.

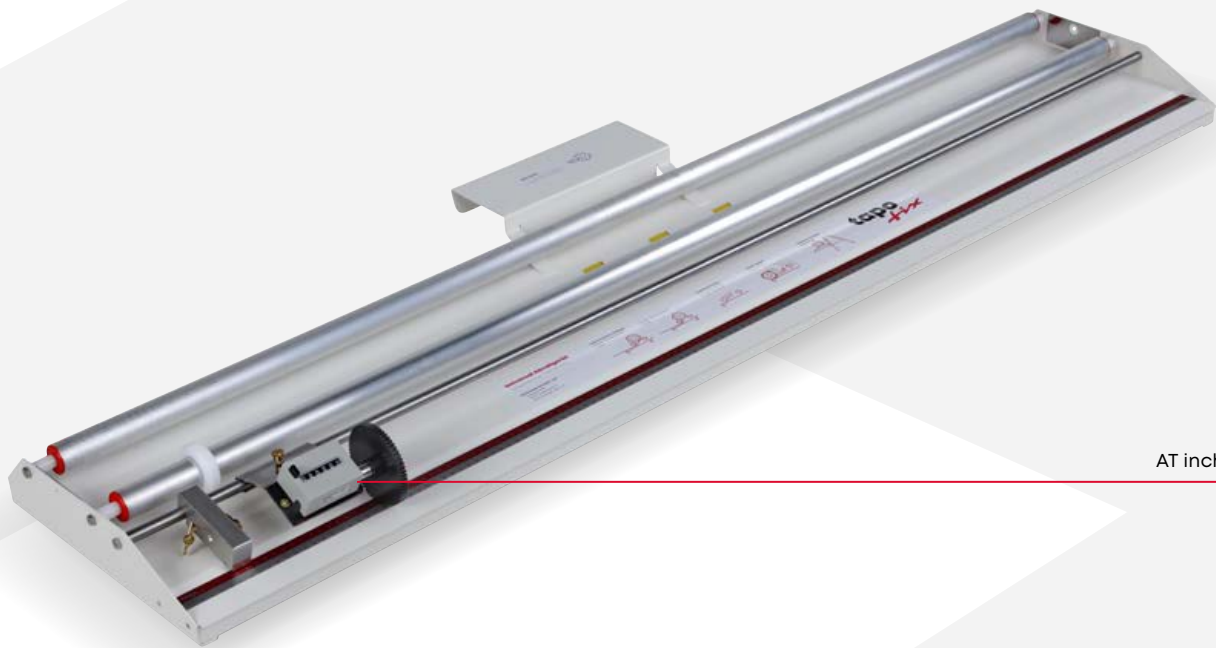
The Universal Dispensers are made of powder-coated steel. With an optional CB or AT inch counter, desired lengths can be measured and cut precisely. There is a cutting edge on the dispenser for cleanly cutting the wallpaper. A strip cutter which cuts the material to precise widths as it is being pulled through the machine is included with every Universal Dispenser. A second strip cutter can be added to enable cutting both sides of the material simultaneously. The dispensers can process 31, 42 and 55 inch materials.



UNIVERSAL SERIES

Benefits

- + easy unrolling, measuring and cutting of wallpaper
- + three widths available
- + also suitable for foils and other rollable materials
- + can be hung on any ladder



AT inch counter*

UNIVERSAL DISPENSERS

| Art. | Working width | Dimensions | Weight |
|---------|---------------|----------------------|----------|
| GAU80i | 32,0 in | 33,0 x 15,0 x 3,5 in | 16,5 lbs |
| GAU109i | 43,0 in | 44,0 x 15,0 x 3,5 in | 20,0 lbs |
| GAU140i | 58,0 in | 59,0 x 15,0 x 3,5 in | 27,0 lbs |

* Optional accessories, not included

tapo[®]
fix

UNIVERSAL 80i / 109i / 140i Accessories



Stand Universal Dispensers 80i / 109i / 140i

Converts any Universal Dispenser to a standing but mobile device. Powder-coated steel construction with Folding legs and locking casters. Stainless steel shelf for handling materials as they are pulled through the dispenser.

STAND UNIVERSAL DISPENSERS

| Art. | Dimensiones | Weight |
|----------|----------------------|----------|
| UG-GAU-N | 39,0 x 22,0 x 5,0 in | 18,5 lbs |



CB inch counter

The CB inch counter makes it possible to quickly and easily cut material to exact lengths in inches while pulling the material through the Pasting Machine. The counter eliminates the need for measuring the wallpaper on the table and is an extreme labor and time saver. Utilizing a bracket made of stainless steel, the CB inch counter quickly attaches to all CB and S Series Pasting Machines and all Universal Dispensers.

CB INCH COUNTER

| Art. | Dimensions | Weight |
|-------|--------------------|---------|
| MZCBI | 7,0 x 5,5 x 4,0 in | 1,5 lbs |

AT inch counter

The AT inch counter is a single-wheeled meter that can be used with the CB Aqua N or any of the Universal Dispensers. The AT inch counter provides all the same benefits of its CB inch meter counterpart with the added benefits of being more compact, lighter in weight and is a more economical option when a single-wheeled counter is sufficient for the job.



AT INCH COUNTER

| Art. | Dimensions | Weight |
|-------|--------------------|---------|
| MZATI | 5,0 x 5,5 x 4,0 in | 1,0 lbs |



Strip Cutter

With the addition of a second strip cutter, wallpaper with selvaged edges can be trimmed on both sides as the material is being pulled through the dispenser. The strip cutter is milled from aluminum and has a blade that can be rotated and changed, thus extending its service life enormously.

STRIP CUTTER

| Art. | Dimensions | Weight |
|--------|--------------------|---------|
| GA-STR | 3,5 x 1,0 x 1,0 in | 0,5 lbs |

CB 1000

100
fix

X

tapo[®]
fix

NOTES

A large, light grey geometric shape with a jagged top edge, resembling a stylized mountain or a series of peaks. It contains a series of horizontal lines for writing, with a white triangular cutout on the left side.

www.tapofix.de

tapo-fix GmbH & Co. KG
Meinstraße 114
D-38448 Wolfsburg
Telefon +49 5363 9771-0
Fax +49 5363 9771-50
info@tapofix.de
Instagram: @tapofix

08 / 2022